



**ALASKA DIVISION OF HOMELAND SECURITY &  
EMERGENCY MANAGEMENT**  
SITUATION REPORT 24-080 • March 20, 2024



Toll-Free 1.800.478.2337

Anchorage Area 907.428.7000

SEOC 907.428.7100

<p><b><u>SEOC Preparedness Level</u></b> Level 1 – Routine Operations.</p>	<p align="center"><a href="http://ready.alaska.gov">http://ready.alaska.gov</a></p>	<p><b><u>National Terrorism Advisory System:</u></b>  <a href="#">Read the NTAS Bulletin here</a></p>
<p><b><u>Maritime Security (MARSEC)</u></b> Level:1- Minimum Appropriate Security Measures</p>	<p><b>WHO Novel Coronavirus Pandemic (COVID-19):</b> <a href="#">2019 Novel Coronavirus</a></p>	<p><b><u>Alaska Military Installation Force Protection Level:</u></b> FPCON Bravo</p>

(Significant changes from previous situation reports are red.)

**Significant Issues:**

**Unalakleet Excessive Snow Event**

SEOC is working with the City to identify the incident period for the excessive snowfall as well as documentation regarding costs, impacts, and any potential damages from the snow event. SEOC will continue to work with the City to support their local disaster declaration request.

**State of Alaska Department of Health (DOH)**

The DOH stands ready to assist with all aspects of public health and, in the event of a public health emergency, is supported by the SEOC and other state departments as required. For current information, see: <https://health.alaska.gov/dph/Pages/default.aspx>  
<https://health.alaska.gov/dph/Emergency/Pages/prepared/default.aspx>

**NTAS Bulletin**

The U.S. Department of Homeland Security issued an updated National Terrorism Advisory Bulletin on May 24, 2023. The current and expired bulletins can be viewed at the below link.  
<https://www.dhs.gov/national-terrorism-advisory-system>

**Travel Alerts and Conditions**

For current driving conditions, dial 511 or visit: <https://511.alaska.gov/>

**Barry Arm Landslide / Tsunami Risk**

For the latest information on the Barry Arm Landslide and Tsunami risk, click here:  
<https://dggs.alaska.gov/hazards/barry-arm-landslide.html>

**Earthquakes**

United States Geological Service (USGS) Earthquake Information: <http://earthquake.usgs.gov/>

National Tsunami Warning Center: <http://tsunami.gov/>

## **Alaska Volcanoes**

**Great Sitkin Alert Level: Watch** and Aviation Color Code: **Orange**  
**Shishaldin Alert Level: Advisory** and Aviation Color Code: **Yellow**

For Alaska Volcano updates, go to: <https://www.avo.alaska.edu/>

## **Air Quality Index (AQI) Advisories**

For the most up-to-date Air Quality Index Advisories:  
<http://dec.alaska.gov/Applications/Air/airtoolsweb/Home/Index>

## **Spills of Oil and Hazardous Substances**

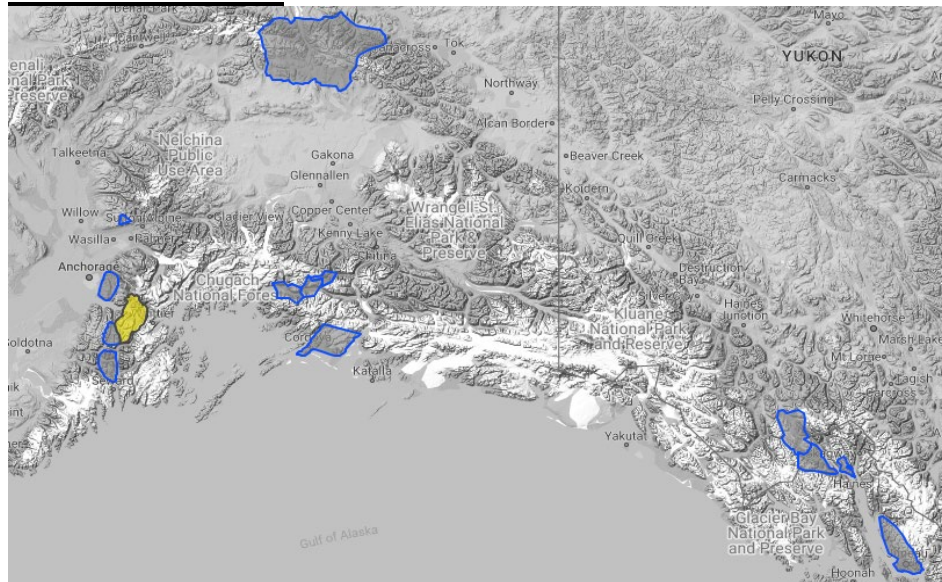
The Alaska Division of Environmental Conservation (ADEC) Spill Prevention and Response page is located at:  
<https://dec.alaska.gov/spar/>

## **Alaska Cyber Security Information**

State Employees may sign up for cybersecurity notifications and alerts at  
<https://oit.alaska.gov/security>

Cybersecurity and Infrastructure Security Agency (CISA)-Cybersecurity Services and Tools:  
[www.cisa.gov/free-cybersecurity-services-and-tools](http://www.cisa.gov/free-cybersecurity-services-and-tools)

## **Avalanche Hazard**

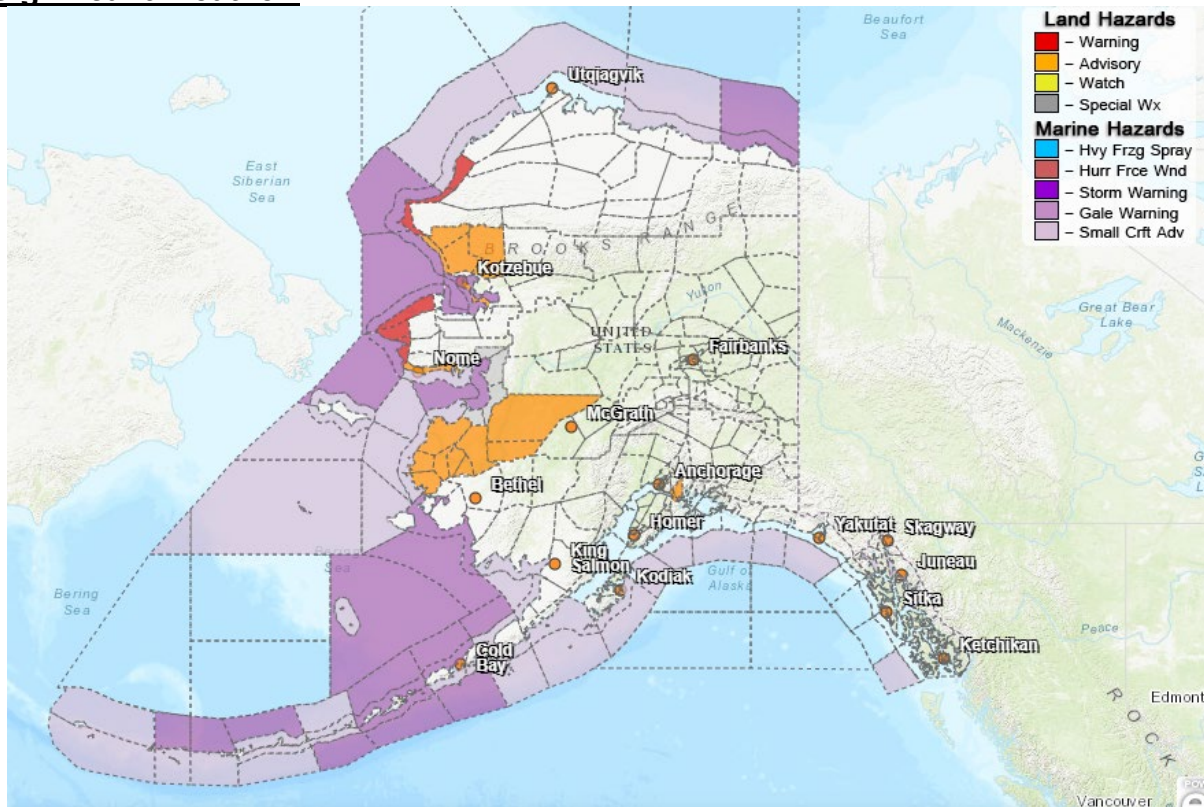


**Travel in avalanche terrain is not recommended. Avoid being on or beneath all steep slopes.**

**Turnagain Pass- Moderate at all elevations**  
**Cordova- Moderate above 1000 ft**

For information and the most current avalanche conditions, go to <https://alaskasnow.org>

## Significant Weather:



### Special Weather Statement

- **Bering Strait Coast, Seward Peninsula Coast, Easter Norton Sound, and Nulato Hills -** Elevated water along Southern Seward Peninsula through Thursday.

### Dense Fog

- **East Turnagain Arm** -until 10am today

### Blizzard Warning

- **Shishmaref, Bering Strait Coast** – until 4am Thursday morning

### Winter Storm Warning

- **Western Artic Coast**-in effect from 10am to 7pm this Wednesday

### Flood Advisory

- **Eastern Aleutians**-until noon Wednesday

### Winter Weather Advisory

- **Southern Seward Peninsula Coast**-until 1pm on Friday
- **Kivalina and Red Dog Dock, Noatak Valley**-until 10pm Wednesday
- **Lower Yukon River and Innoko Valley**- in effect from 7pm this evening until 10am Friday

For more information and the most current weather, Watches / Warnings / Advisories go to:  
<https://www.weather.gov/arh/>

**The Next Situation Report** will be **March 21, 2024**. A significant change in the situation or the threat level will prompt an interim report. This report is posted on the internet at <https://ready.alaska.gov/sitrep>.

To register for email distribution, go to <http://list.state.ak.us/mailman/listinfo/dhsem.situation.report>. Direct questions regarding this report to the SEOC at 907-428-7100 or [seoc@alaska.gov](mailto:seoc@alaska.gov).

